

Area Valve Service Unit

Features

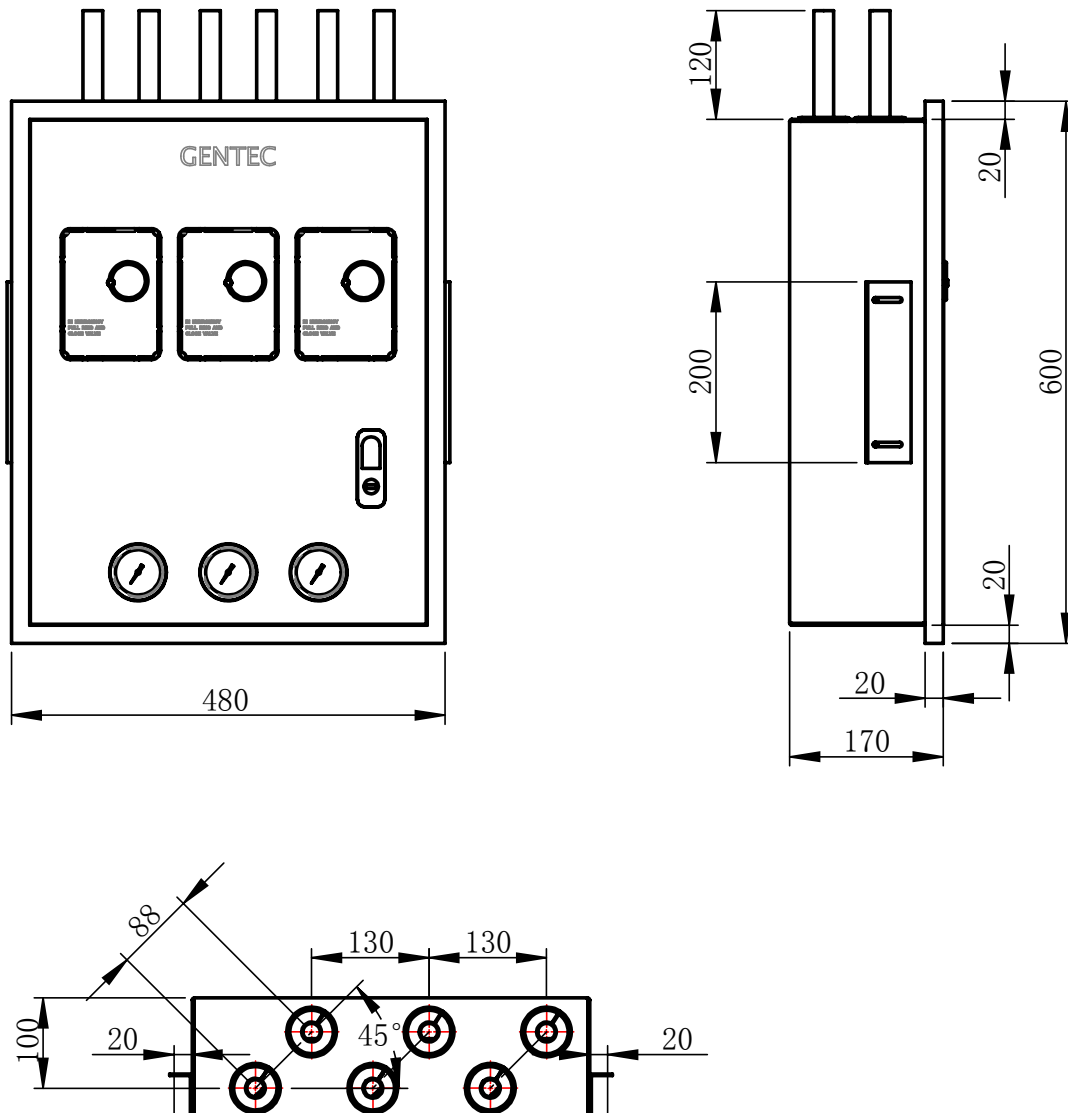
- Includes shut-off valve and check valve with NIST connection, easy to operate and maintain
- Diaphragm-sensed regulator provides a consistent outlet flow
- Pressure gauges included to provide accurate reading
- HTM 02-01 compliant
- Gas service: Oxygen, Nitrogen, Air, Vacuum, and other medical gas
- Maximum operating pressure:
Pressure: 200 psi; Vacuum: -8.7 psi
- Design Pressure:
Pressure line: 232 psi; Vacuum line : -14.5 psi
- Configuration (3 valve):
Both inlet pipe and outlet pipe face upward (vertical)



Ordering Information

| AVB | H | - | 3 | - | O | - | 10 |
|-----|--|---|--------------------|--|---|--|----|
| | Standard | | Number of Channels | Gas Service | | Pipe Diameter | |
| | H: HTM standard compliant E: ISO 7396 (EN737) compliant | | (1-3) | O: Oxygen V: Vacuum A: Medical Air 2: Nitrous Oxide C: Carbon Dioxide N: Nitrogen | | 05: 1/2" 07: 3/4" 10: 1" 15: 1-1/2" | |

Dimensions



Ordering Information

| Dimensions: in.(mm) | | | |
|---------------------|------------|------------|-----------|
| Pipe Diameter | H | L | W |
| 1/2" | 16.5"(420) | 13.8"(350) | 6.3"(160) |
| 3/4" | 23.6"(600) | 18.9"(480) | 7.1"(180) |
| 1" | 23.6"(600) | 18.9"(480) | 7.1"(180) |
| 1-1/4" | 31.1"(790) | 25.2"(640) | 7.1"(180) |
| 1-1/2" | 31.1"(790) | 25.2"(640) | 7.1"(180) |

Note: Pipe diameter can be chosen to meet user requirements; enclosure dimensions are determined by the dimensions of the pipe.