

R17B SERIES

High Purity High Flow Regulator

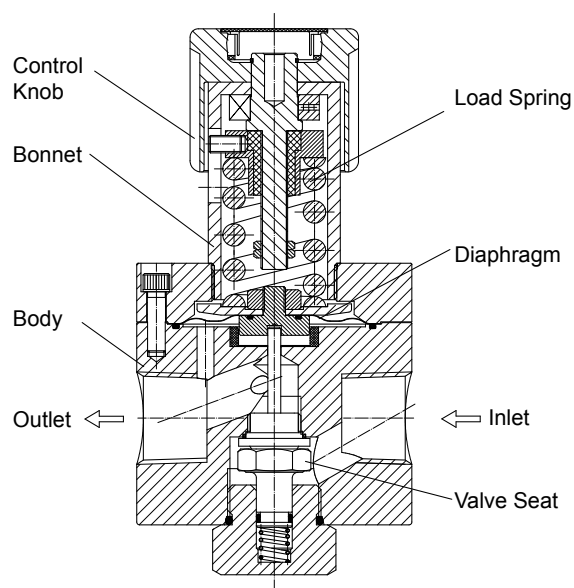
Specialty Gas Equipment



» R17BJB-FGK-08-08

Materials

• Body	Nickel-Plated Brass Barstock
• Seat	PU, NBR
• Diaphragm	316L Stainless Steel, PTFE
• Stem	316L Stainless Steel
• Spring	316L Stainless Steel



GENTEC® R17B Series Stainless Steel Regulator is a diaphragm-sensed single-stage high flow regulator.

Product Features

- Single-Stage Configuration
- Inlet & Outlet Port Size: 1" NPT(F)
- 2" Pressure Gauge

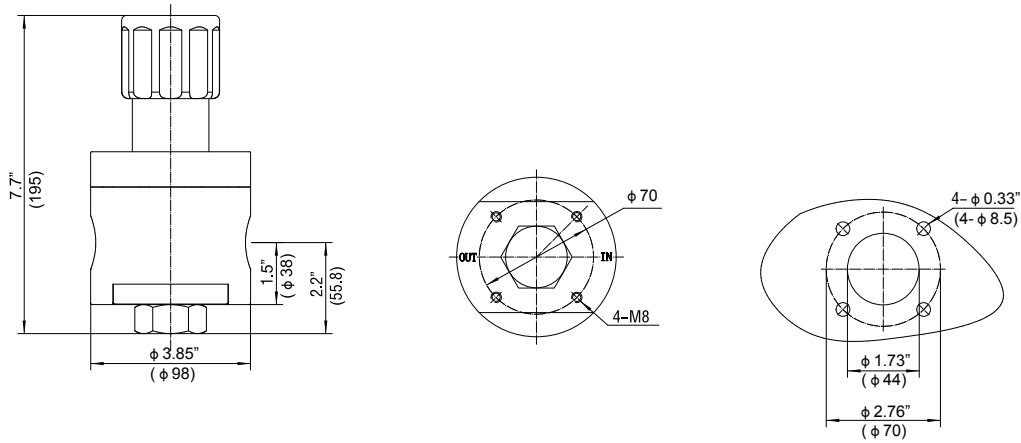
Applications

- petrochemical
- power plant equipment
- low pressure tank
- heat treatment equipment

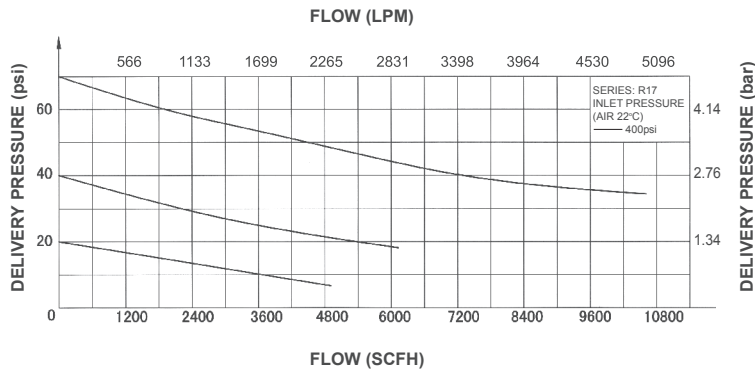
Specifications

- **Maximum inlet pressure:**
 - PU Seat: 3000 psi (206 bar)
 - NBR Seat: 500 psi (34 bar)
- **Maximum outlet pressure:**
 - 316L Diaphragm: 250 psi (17 bar)
 - PTFE Diaphragm: 50 psi (3.4 bar)
- **Safety test pressure:** 1.5 x Maximum inlet pressure
- **Temperature range:** -10 to 250°F (-23 to 121°C)
- **Inboard leakage:** 2×10^{-8} atm.cc/sec He
- **Outboard leakage:** 2×10^{-8} atm.cc/sec He
- **Maximum Cv:** 5.2
- **Weight:** 13.23 lb (6 kg)

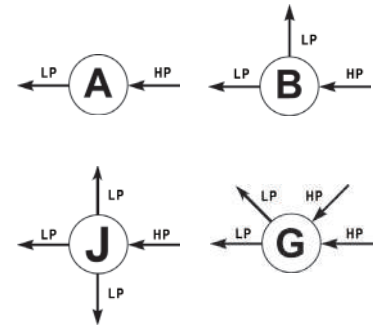
Dimensions



Flow Data



Body Port



Ordering Information

EX:R17B	J	B -	F	K	P -	08 -	08
Series	Body Ports	Seat	Inlet Pressure Range	Outlet Pressure Ranges	Gauge	Inlet Connections	Outlet Connections
• R17B	A B G J	P: PU B: NBR	D: 3000 psi (206 bar) F: 500 psi (35 bar)	316L Diaphragm G: 0-250 psi (17 bar) H: 0-150 psi (10 bar) I: 0-100 psi (7 bar) PTFE Diaphragm J: 0-75 psi (5 bar) K: 0-50 psi (3 bar) L: 0-25 psi (1.7 bar) M: 0-15 psi (1 bar) N: 0-6 psi (0.4 bar)	P: psi / bar K: psi / kPa W: No Gauge	08: 1" NPT(F) Other connections available*	08: 1" NPT(F) Other connections available*

*: For more options contact GENTEC.