

# DV53 SERIES

Stainless Steel Multi-way Diaphragm Valves

GENTEC® Valves



## Product Features

- Suitable for high purity applications
- Connections: FSR, NPT and GENLOK
- Metal-to-metal seal minimizes particle generation and ensures purity integrity in the flow passages
- Long service life
- 100% Helium leak tested

## Materials

- Body: 316L
- Seat: PCTFE
- Diaphragm: Elgiloy®

## Specifications

- Cv: 0.16
- Leak Rate
  - Inboard:  $1 \times 10^{-9}$  atm cc/sec He
  - Across Seat:  $4 \times 10^{-9}$  atm cc/sec He
- Proof Pressure: 150% of maximum operating pressure
- Burst Pressure: 400% of maximum operating pressure

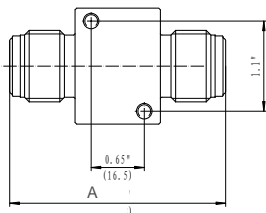
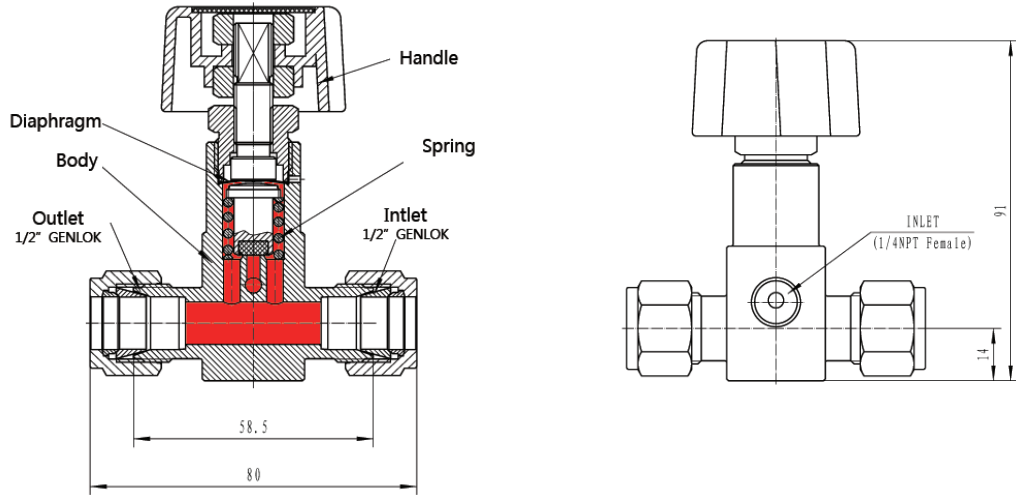
## Operating Conditions

- Maximum operating pressure: 3500 psi (240 bar)
- Minimum operating pressure: Vacuum
- Operating temperature: 40°F ~ 150°F (-40°C ~ 65°C)

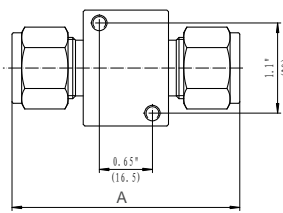
## Surface Finish

- Standard Ra: 20  $\mu$ m

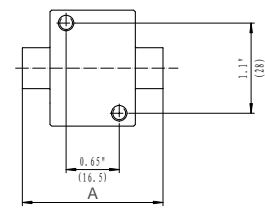
**Dimensions**



Face seal male (FSR fittings)



GENLOK Fitting



Butt welded

**Flow Path Designator**

Type	Three-way	Four-way
Flow schematic	E	I
Red arrow indicates inlet, Blue arrow indicates outlet*		

\*All schematics are from top view

Inlet	Outlet	A (mm)
FNT4	TF6	50.3
FNT4	TF8	58.5
FNT4	TW6	58.5
FNT4	TW8	39.5
FNT4	VM8	67.1

**Ordering Information**

EX: SL -	DV53	M	H	E -	FNT4 -	TF6
Body Material	Series	Actuation	Working Pressure	Flow Path	Inlet Connection	Outlet Connection
SL: 316SL	<b>DV53</b>	N: Handwheel (without status window) M: Handwheel (with status window)	H: 3500 psi	Three-way valve E: Right inlet, top / bottom outlet Four-way valve I: Two inlet / two outlet Please refer to Flow Path Designator table above	FNT4	TF6, TF8 TW6, TW8 VM8