

DV84 SERIES

Stainless Steel High Purity Diaphragm Valves

GENTEC® Valves



Manual

Product Features

- Suitable for ultra high purity applications
- Both manual and pneumatic actuation are available
- End connections: Face seal fittings (FSR) and butt welded
- Internal spring-less design and metal-to-metal seal minimizes particle generation and ensures "purity integrity" in the flow passages
- Cleaned and degreased for oxygen service according to CGA G-4.1 and ASTM G93 Class C, respectively
- Long service life
- 100% Helium-leak tested



Pneumatic

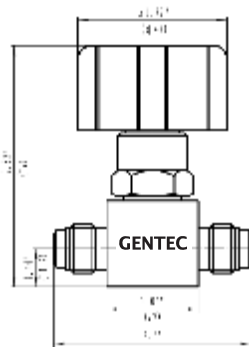
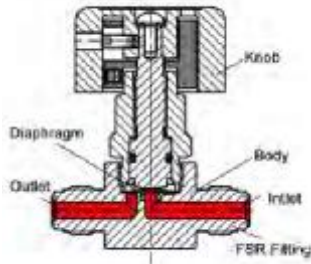
Specifications

- Body: 316L stainless steel
- Seat: PCTFE*, Vespel®**
- Diaphragm: Elgiloy®
- Maximum operating pressure:
300 psi (20 bar), 3500 psi (240 bar)
- Operating temperature:
-40°F ~ 150°F (-40°C ~ 65°C)
- Cv: 0.17
- Standard Ra: 10 ~15 µin (BA)
Optional: 7 µin (EP)

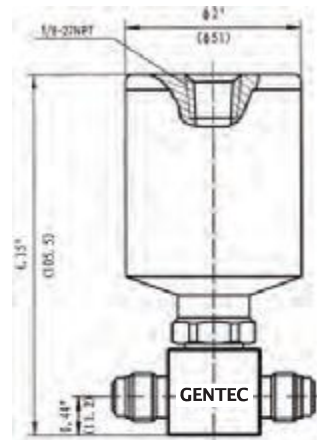
* Standard Material

** Vespel® seat is recommended for Nitrous Oxide (N2O) service but is not available for low pressure pneumatic actuation.

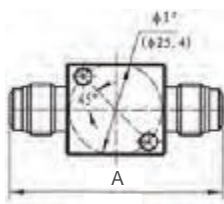
Dimensions



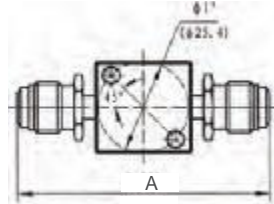
Manual



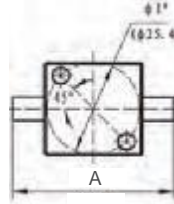
Pneumatic (High Pressure)



Face seal male (FSR fittings)



Face seal swivel male (FSR fittings)



Butt welded

Connections*	A (mm)
VM4	58.4
VM8	67.6
VSM4	70.8
VSF4	70.6
TW4	44.2
TW8	44.2

*: Applies to both inlet & outlet connections

Ordering Information

EX: SL -	DV84	M	H -	VM4 -	K	E -	IS
Body Material	Series	Actuation	Working Pressure	Inlet /Outlet Connection	Valve Seat	Options	Option
SL: 316SL	DV84	M: Handwheel (with status window) P: Pneumatic actuator (Normally closed)	H: 3500 psi	VM4, VM8 VSM4, VSM8 VSF4, VSF8 TW4, TW8	K: PCTFE V: VespeI®	None: 10~15 µin E: 7 µin (EP)	IS: Electronic indicator*

*For pneumatic configuration only

Inlet & Outlet Connections		
Type	Dimensions	
VM: Face seal male (FSR fittings)	4, 8	4 = 1/4"
VSM: Face seal swivel male (FSR fittings)	4, 8	6 = 3/8"
VSF: Face seal swivel female (FSR fittings)	4, 8	8 = 1/2"
TW: Butt welded	4, 6, 8	